

CAPABILITY STATEMENT 17—DAM DESIGN

Analysis, Design and Construction Supervision of Embankment Dams

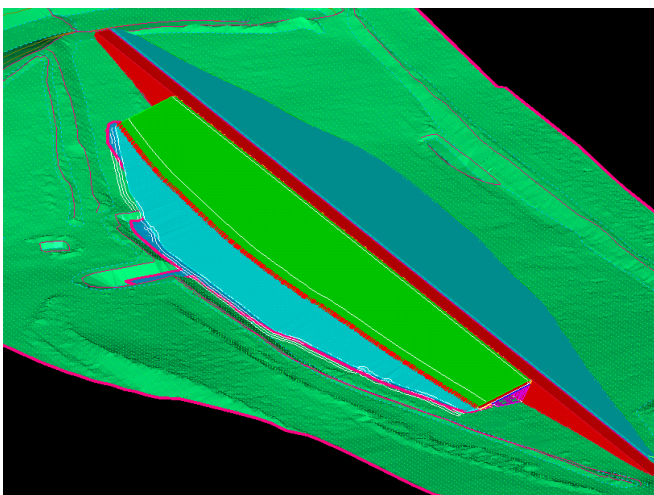
DAM DESIGN

Water retaining dams and tailings dams are high risk items for a project owner. The risk of failure brings significant potential for damage and litigation. Construction costs are high and therefore there is a need to get it right in the most economical way possible.

A typical design process for a water retaining dam is as follows:

- Concept design/sketches to establish water volumes and earthworks quantities
- Hydrological assessment for flood events
- Geotechnical and hydrogeological investigation for embankment footprint and borrow materials
- Spillway and diversion channel design
- Filter design (if needed)
- Draft drawings and quantities for client approval
- Issued-for-construction (IFC) drawings and quantities, including basis of design and construction method statement
- As-constructed drawings

Drawings are often transferred electronically and 3D models uploaded into construction equipment for machine control to remove interpretation and guesswork out of plans.



WHAT CAN GALT OFFER

Galt has skilled civil designers, geotechnical engineers, hydrogeologists and hydrologists to address all aspects of dam design. This includes:

- Design taking into account standards established by ANCOLD
- Ground investigation
- Full documentation
- Construction quality assurance
- Full or part time engineering support on site, including resident engineer representation and laboratory testing.
- Construction troubleshooting
- Materials search
- Close-out documentation and operating manuals

Contact us today for more information

GALT GEOTECHNICS PTY LTD

50 Edward Street
OSBORNE PARK WA 6017

Phone: (08) 6272 0200
Mobile: (0438) 111 360
E-mail: owen.woodland@galtgeo.com.au