

CAPABILITY STATEMENT 16—CIVIL DESIGN

Analysis, Concept Design and Detailed Design of Earth Structures, Dams, Roads, Drains and Pads

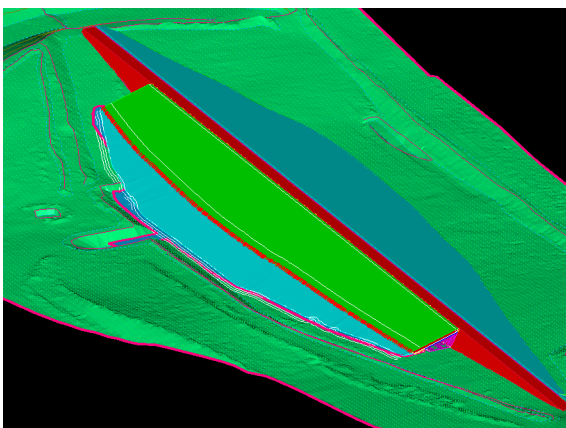
WHAT IS CIVIL DESIGN?

Civil design is bringing concept into clear and logical engineering plans and drawings to facilitate construction of your development. This includes the derivation of quantities for pricing and construction.

The stages typically followed are:

- Concept design/sketches
- Draft drawings and quantities for client approval
- Issued-for-construction (IFC) drawings and quantities
- As-constructed drawings

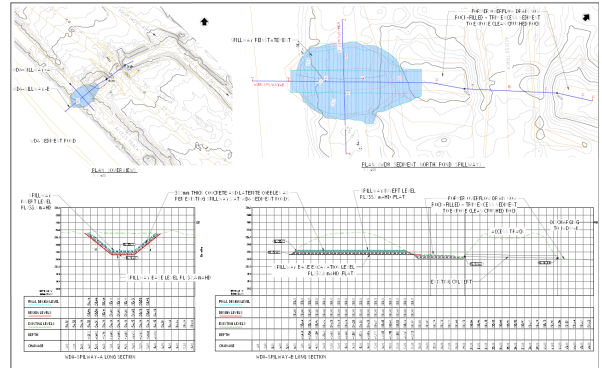
Traditionally, civil design was done on paper with large drawing sets printed out and brought to site. However, with the advent of modern technology, drawings are often transferred electronically and 3D models uploaded into construction equipment for machine control to remove interpretation and guesswork out of plans.



THE GALT ADVANTAGE

With geotechnical engineering as our core discipline, we ensure that geotechnical risks are addressed in the design and implementation, such as:

- Geohazards (landslides, flood plains, etc)
- Poor in-situ foundation and borrow materials
- Shallow groundwater
- Slope stability



WHAT CAN GALT OFFER

Galt has skilled civil designers and engineers to produce all aspects of civil design for documentation of your project. This includes:

- Dams for water retaining and tailings
- Borrow materials
- Earth structures (road embankments, working pads)
- Surface water drainage, piped drains and land drains
- Dewatering (temporary and permanent)
- Haul roads and access tracks

Working with sophisticated 3D modelling techniques, we can provide advanced visualization (including fly-throughs, etc), full 2D drawing sets and 3D models for machine control, survey set-out etc.

We can also undertake compliance checks on as-constructed infrastructure.

GALT GEOTECHNICS PTY

50 Edward Street
OSBORNE PARK WA 6017

Phone: (08) 6272 0200
Mobile: (0438) 111 360

E-mail:
owen.woodland@galtgeo.com.au